

DATASHEET

Claudin-4 Mouse Monoclonal Antibody(ARA926)

CAT. NO. ARA6761

KEY FEATURES

Target	Claudin-4	Source / Host	Mouse
Reactivity	Human	Clonality	Monoclonal
Applications	IHC	Storage	-20°C

BACKGROUND

Claudin4 is a tight junction protein and one of the key proteins that affect the function of tight junctions between cells. Overexpression in pancreatic cancer, breast cancer, ovarian cancer, prostate cancer, bladder cancer cancer, endometrial cancer and other epithelial tumors, on the one hand, reduces the invasion and metastasis ability of tumor cells, on the other hand, tumors with high expression of claudin-4 may be a potential target of CPE therapy.

APPLICATION

To ensure optimal assay performance, AREX recommends conducting reagent titration tailored to each testing system for optimal detection results.

IHC	1:100-1:200
-----	-------------

*Results are sample-specific. Please refer to your local assay conditions and test parameters for reference.

PRODUCT OVERVIEW

Product Name	Claudin-4 Mouse Monoclonal Antibody(ARA926)
Other Names	Claudin-4
Applications	Immunohistochemistry/Fluorescence
Species Reactivity	Human
Clonality	Monoclonal

*AREX continuously optimizes our products. Webpage content may not reflect the latest updates. For inquiries, please contact info@arexbio.com or your local distributor.

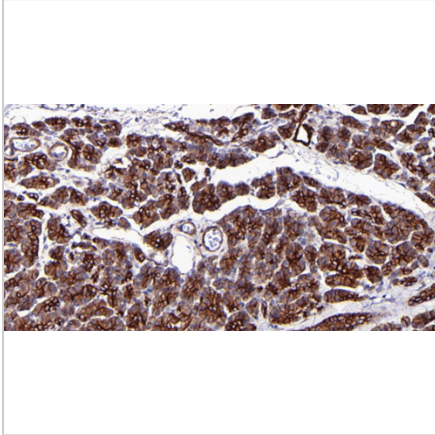
*Clone Number, Reactivity, Source/Host and Clonality can be found in the product name and Key Features section above.

DATASHEET

Claudin-4 Mouse Monoclonal Antibody(ARA926)

CAT. NO. ARA6761

DATA



Immunohistochemical staining of human pancreas tissue using Claudin-4 Mouse Monoclonal Antibody(ARA926)

STORAGE

Shipped at 4°C. Store at -20°C for one year. Avoid repeated freeze/thaw cycles.

NOTE

For Research Use Only. Not for diagnostic, therapeutics, prophylactic or in vivo use.

More information: www.arexbio.com