

DATASHEET

BRM Rabbit Monoclonal Antibody(ARA929)

CAT. NO. ARA6766

KEY FEATURES

Target	BRM	Source / Host	Rabbit
Reactivity	Human, Monkey	Clonality	Monoclonal
Applications	IHC	Storage	-20°C

BACKGROUND

Probable global transcription activator SNF2L2 is a protein that in humans is encoded by the SMARCA2 gene. The protein encoded by this gene is a member of the SWI/SNF family of proteins and is highly similar to the brahma protein of Drosophila. Members of this family have helicase and ATPase activities and are thought to regulate transcription of certain genes by altering the chromatin structure around those genes. The encoded protein is part of the large ATP-dependent chromatin remodeling complex SNF/SWI, which is required for transcriptional activation of genes normally repressed by chromatin. Two transcript variants encoding different isoforms have been found for this gene, which contains a trinucleotide repeat (CAG) length polymorphism.

APPLICATION

To ensure optimal assay performance, AREX recommends conducting reagent titration tailored to each testing system for optimal detection results.

IHC	1:50-1:200
-----	------------

*Results are sample-specific. Please refer to your local assay conditions and test parameters for reference.

PRODUCT OVERVIEW

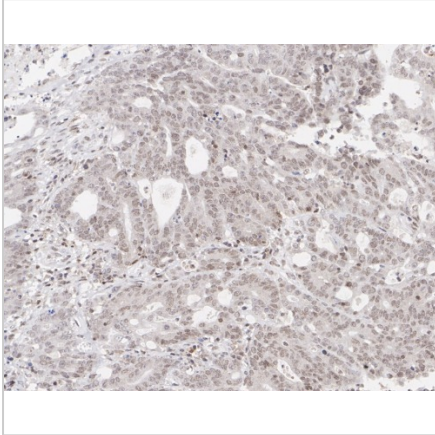
Antibody Type	Recombinant Rabbit monoclonal Antibody
Immunogen	Synthetic peptide within human SMARCA2 aa 231-280 / 1,590
Molecular Weight	Predicted band size: 181 kDa
Positive Control	HeLa cell lysate, HepG2 cell lysate, A549 cell lysate, MCF7 cell lysate, COS-1 cell lysate, human colon carcinoma tissue, human prostate carcinoma tissue, MCF7
Conjugation	unconjugated
Form/Buffer	PBS (pH7.4), 0.1% BSA, 40% Glycerol. Preservative: 0.05% Sodium Azide
Isotype	IgG
Purification	Protein A affinity purified

*AREX continuously optimizes our products. Webpage content may not reflect the latest updates. For inquiries, please contact info@arexbio.com or your local distributor.

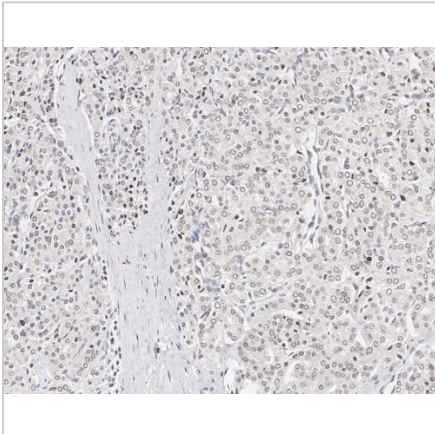
*Clone Number, Reactivity, Source/Host and Clonality can be found in the product name and Key Features section above.

DATASHEET**BRM Rabbit Monoclonal Antibody(ARA929)**

CAT. NO. ARA6766

DATA

Immunohistochemical staining of human colon carcinoma tissue using BRM Rabbit Monoclonal Antibody(ARA929)



Immunohistochemical staining of human prostate carcinoma tissue using BRM Rabbit Monoclonal Antibody(ARA929)

STORAGE

Shipped at 4°C. Store at -20°C for one year. Avoid repeated freeze/thaw cycles.

NOTE

For Research Use Only. Not for diagnostic, therapeutics, prophylactic or in vivo use.

More information: www.arexbio.com