

**DATASHEET**

**ARID1B Rabbit Polyclonal Antibody**

**CAT. NO. ARA6768**

**KEY FEATURES**

Target	ARID1B	Source / Host	Rabbit
Reactivity	Human	Clonality	Polyclonal
Applications	IHC	Storage	-20°C

**BACKGROUND**

This locus encodes an AT-rich DNA interacting domain-containing protein. The encoded protein is a component of the SWI/SNF chromatin remodeling complex and may play a role in cell-cycle activation. The protein encoded by this locus is similar to AT-rich interactive domain-containing protein 1A. These two proteins function as alternative, mutually exclusive ARID-subunits of the SWI/SNF complex. The associated complexes play opposing roles. Alternatively spliced transcript variants encoding different isoforms have been described.

**APPLICATION**

To ensure optimal assay performance, AREX recommends conducting reagent titration tailored to each testing system for optimal detection results.

IHC	1:50-1:150
-----	------------

\*Results are sample-specific. Please refer to your local assay conditions and test parameters for reference.

**PRODUCT OVERVIEW**

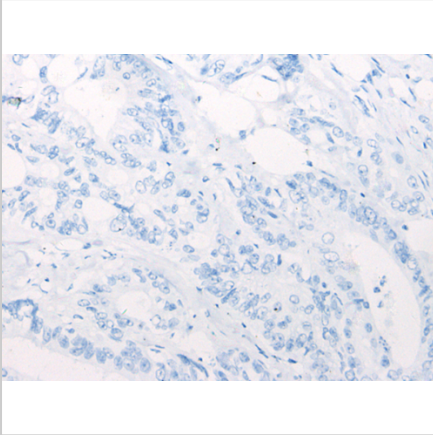
Host	Rabbit
Clonality	Polyclonal
Immunogen	Synthetic peptide of human ARID1B
Isotype	IgG
Form/Buffer	pH7.4 PBS, 0.05% NaN <sub>3</sub> , 40% Glycerol
Purification	Antigen affinity purification
Conjugation	Unconjugated

\*AREX continuously optimizes our products. Webpage content may not reflect the latest updates. For inquiries, please contact [info@arexbio.com](mailto:info@arexbio.com) or your local distributor.

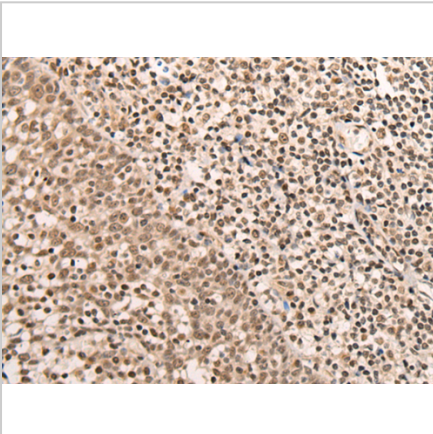
\*Clone Number, Reactivity, Source/Host and Clonality can be found in the product name and Key Features section above.

**DATASHEET****ARID1B Rabbit Polyclonal Antibody**

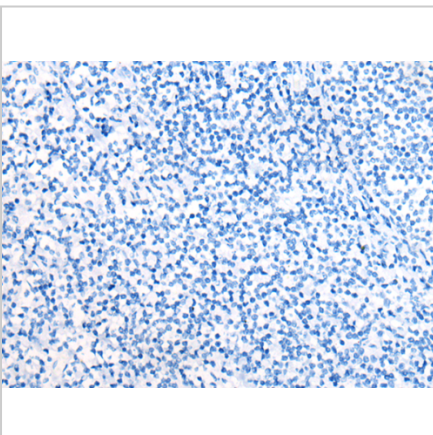
CAT. NO. ARA6768

**DATA**

Immunohistochemical staining of human colorectal cancer tissue using ARID1B Rabbit Polyclonal Antibody



Immunohistochemical staining of human tonsil tissue using ARID1B Rabbit Polyclonal Antibody



Immunohistochemical staining of human tonsil tissue using ARID1B Rabbit Polyclonal Antibody

**STORAGE**

Shipped at 4°C. Store at -20°C for one year. Avoid repeated freeze/thaw cycles.

**NOTE**

For Research Use Only. Not for diagnostic, therapeutics, prophylactic or in vivo use.

More information: [www.arexbio.com](http://www.arexbio.com)