

DATASHEET

Cyclin E1 Rabbit Monoclonal Antibody(ARA952)

CAT. NO. ARA6794

KEY FEATURES

Target	Cyclin E1	Source / Host	Rabbit
Reactivity	Human	Clonality	Monoclonal
Applications	IHC	Storage	-20°C

BACKGROUND

The protein encoded by this gene belongs to the highly conserved cyclin family, whose members are characterized by a dramatic periodicity in protein abundance through the cell cycle. Cyclins function as regulators of CDK. Different cyclins exhibit distinct expression and degradation patterns which contribute to the temporal coordination of each mitotic event. This cyclin forms a complex with and functions as a regulatory subunit of CDK2, whose activity is required for cell cycle G1/S transition. This protein accumulates at the G1-S phase boundary and is degraded as cells progress through S phase. Overexpression of this gene has been observed in many tumors, which results in chromosome instability, and thus may contribute to tumorigenesis. This protein was found to associate with, and be involved in, the phosphorylation of NPAT protein (nuclear protein mapped to the ATM locus), which participates in cell-cycle regulated histone gene expression and plays a critical role in promoting cell-cycle progression in the absence of pRB. Two alternatively spliced transcript variants of this gene, which encode distinct isoforms, have been described. Two additional splice variants were reported but detailed nucleotide sequence information is not yet available.

APPLICATION

To ensure optimal assay performance, AREX recommends conducting reagent titration tailored to each testing system for optimal detection results.

IHC	1:200-1:1000
-----	--------------

*Results are sample-specific. Please refer to your local assay conditions and test parameters for reference.

PRODUCT OVERVIEW

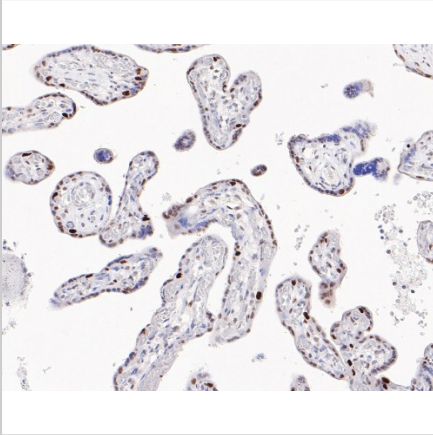
Antibody Type	Recombinant Rabbit Monoclonal Antibody
Immunogen	Synthetic peptide within Human Cyclin E1 aa 361 - 410 / 410
Molecular Weight	Predicted band size: 47 kDa
Positive Control	HeLa cell lysate, Human lung tissue lysate, Human kidney tissue lysate, HeLa, human placenta tissue, human colon carcinoma tissue, mouse testis tissue
Conjugation	unconjugated
Form/Buffer	1*TBS (pH7.4), 0.05% BSA, 40% Glycerol. Preservative: 0.05% Sodium Azide
Isotype	IgG
Purification	Protein A affinity purified

*AREX continuously optimizes our products. Webpage content may not reflect the latest updates. For inquiries, please contact info@arexbio.com or your local distributor.

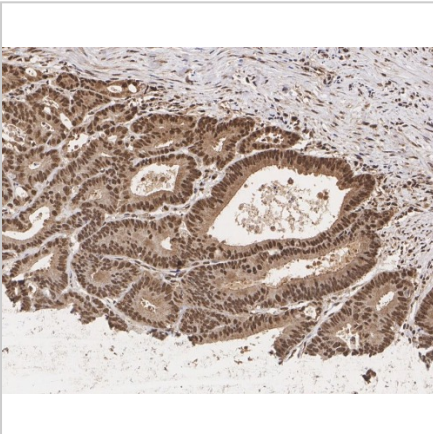
*Clone Number, Reactivity, Source/Host and Clonality can be found in the product name and Key Features section above.

DATASHEET**Cyclin E1 Rabbit Monoclonal Antibody(ARA952)**

CAT. NO. ARA6794

DATA

Immunohistochemical staining of human placenta tissue using Cyclin E1 Rabbit Monoclonal Antibody(ARA952)



Immunohistochemical staining of human colon carcinoma tissue using Cyclin E1 Rabbit Monoclonal Antibody(ARA952)

STORAGE

Shipped at 4°C. Store at -20°C for one year. Avoid repeated freeze/thaw cycles.

NOTE

For Research Use Only. Not for diagnostic, therapeutics, prophylactic or in vivo use.

More information: www.arexbio.com