

DATASHEET

CK(LMW) Mouse Monoclonal Antibody(ARA953)

CAT. NO. ARA6795

KEY FEATURES

Target	CK(LMW)	Source / Host	Mouse
Reactivity	Human	Clonality	Monoclonal
Applications	IHC	Storage	-20°C

BACKGROUND

CK (LMW) is low - molecular - weight cytokeratin. It is expressed in almost all non - squamous epithelia, especially various single - layered tubular glandular epithelia, while squamous epithelia do not express it. It marks ovarian adenocarcinoma, gastrointestinal adenocarcinoma, thyroid cancer and the vast majority of ductal carcinomas; especially, it shows significantly positive marking for tumors arising from breast, pancreas, bile duct and salivary gland epithelia, tumors of endocrine organs (carcinomas and adenomas), liver cancer, endometrial cancer, renal cell carcinoma, neuroendocrine tumors, etc.; transitional cell carcinoma of the bladder, nasopharyngeal carcinoma, thymoma, and mesothelioma also show positive reactions; while the vast majority of squamous cell carcinomas are negative.

APPLICATION

To ensure optimal assay performance, AREX recommends conducting reagent titration tailored to each testing system for optimal detection results.

IHC	1:100-1:200
-----	-------------

*Results are sample-specific. Please refer to your local assay conditions and test parameters for reference.

PRODUCT OVERVIEW

Note	Cytokeratin (LMW) low molecular weight cytokeratin can mark almost all non-squamous epithelium, especially various single-layer ductal gland epithelium. It is not expressed in squamous epithelium
Tissue Type	Paraffin sections

*AREX continuously optimizes our products. Webpage content may not reflect the latest updates. For inquiries, please contact info@arexbio.com or your local distributor.

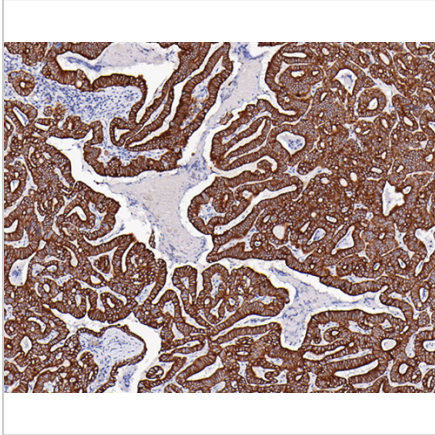
*Clone Number, Reactivity, Source/Host and Clonality can be found in the product name and Key Features section above.

DATASHEET

CK(LMW) Mouse Monoclonal Antibody(ARA953)

CAT. NO. ARA6795

DATA



Immunohistochemical staining of human thyroid tumor tissue sections using CK(LMW) Mouse Monoclonal Antibody (ARA953).

STORAGE

Shipped at 4°C. Store at -20°C for one year. Avoid repeated freeze/thaw cycles.

NOTE

For Research Use Only. Not for diagnostic, therapeutics, prophylactic or in vivo use.

More information: www.arexbio.com