

DATASHEET

EBER/Ribosomal Protein L22 Rabbit Polyclonal Antibody

CAT. NO. ARA6796

KEY FEATURES

| | | | |
|--------------|-------------------|---------------|------------|
| Target | EBER | Source / Host | Rabbit |
| Reactivity | Human, Mouse, Rat | Clonality | Polyclonal |
| Applications | IHC | Storage | -20°C |

BACKGROUND

Ribosomes, the organelles that catalyze protein synthesis, consist of a small 40S subunit and a large 60S subunit. Together these subunits are composed of 4 RNA species and approximately 80 structurally distinct proteins. This gene encodes a cytoplasmic ribosomal protein that is a component of the 60S subunit. The protein belongs to the L22E family of ribosomal proteins. Its initiating methionine residue is post-translationally removed. The protein can bind specifically to Epstein-Barr virus-encoded RNAs (EBERs) 1 and 2. The mouse protein has been shown to be capable of binding to heparin. Transcript variants utilizing alternative polyA signals exist. As is typical for genes encoding ribosomal proteins, there are multiple processed pseudogenes of this gene dispersed through the genome. It was previously thought that this gene mapped to 3q26 and that it was fused to the acute myeloid leukemia 1 (AML1) gene located at 21q22 in some therapy-related myelodysplastic syndrome patients with 3;21 translocations; however, these fusions actually involve a ribosomal protein L22 pseudogene located at 3q26, and this gene actually maps to 1p36.3-p36.2.

APPLICATION

To ensure optimal assay performance, AREX recommends conducting reagent titration tailored to each testing system for optimal detection results.

| | |
|-----|--------------|
| IHC | 1:50 - 1:100 |
|-----|--------------|

*Results are sample-specific. Please refer to your local assay conditions and test parameters for reference.

PRODUCT OVERVIEW

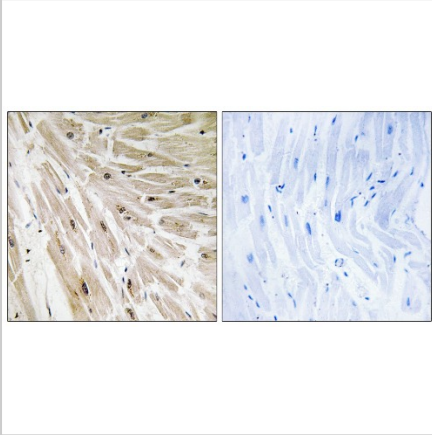
| | |
|------------------------------|--|
| Theoretical Molecular Weight | 15kDa |
| Observed Molecular Weight | 15kDa |
| Positive Samples | 293T, HeLa, U-87MG, HepG2, Jurkat |
| Form/Buffer | Buffer: PBS with 0.01% thimerosal, 50% glycerol, pH7.3 |
| Immunogen | Recombinant protein (or fragment). This information is considered to be commercially sensitive |
| Form | Liquid |
| Conjugation | Unconjugated |
| Cellular Localization | cytoplasm, cytosol, cytosolic ribosome, extracellular exosome, focal adhesion, nucleus |
| Purification | Affinity purification |
| Gene ID | 6146 |
| SwissProt | P35268 |
| Synonyms | EAP; L22; HBP15; HBP15/L22; 22 |

*AREX continuously optimizes our products. Webpage content may not reflect the latest updates. For inquiries, please contact info@arexbio.com or your local distributor.

*Clone Number, Reactivity, Source/Host and Clonality can be found in the product name and Key Features section above.

DATASHEET**EBER/Ribosomal Protein L22 Rabbit Polyclonal Antibody**

CAT. NO. ARA6796

DATA

Immunohistochemical staining of human heart tissue sections using EBER Rabbit Polyclonal Antibody.

STORAGE

Shipped at 4°C. Store at -20°C for one year. Avoid repeated freeze/thaw cycles.

NOTE

For Research Use Only. Not for diagnostic, therapeutics, prophylactic or in vivo use.

More information: www.arexbio.com