

DATASHEET

Tau (S422) Mouse Monoclonal Antibody(ARA958)

CAT. NO. ARA6807

KEY FEATURES

Target	Tau (S422)	Source / Host	Mouse
Reactivity	Human	Clonality	Monoclonal
Applications	Sandwich ELISA	Storage	-20°C

BACKGROUND

Tau is a neuronal microtubule-associated protein found predominantly on axons. The function of Tau is to promote tubulin polymerization and stabilize microtubules. The C-terminus binds axonal microtubules while the N-terminus binds neural plasma membrane components, suggesting that tau functions as a linker protein between both. Axonal polarity is predetermined by TAU/MAPT localization (in the neuronal cell) in the domain of the cell body defined by the centrosome. The short isoforms allow plasticity of the cytoskeleton while the longer isoforms may preferentially play a role in its stabilization. In its hyper-phosphorylated form, Tau is the major component of paired helical filaments (PHF), the building block of neurofibrillary lesions in Alzheimer's diseases (AD) brain. Hyper-phosphorylation impairs the microtubule binding function of Tau, resulting in the destabilization of microtubules in AD brains, ultimately leading to the degeneration of the affected neurons. Numerous serine/threonine kinases phosphorylate Tau, including GSK-3beta, protein kinase A (PKA), cyclin-dependent kinase 5 (cdk5) and casein kinase II. Hyper-phosphorylated Tau is found in neurofibrillary lesions in a range and other central nervous system disorders such as Pick's disease, frontotemporal dementia, cortico-basal degeneration and progressive supranuclear palsy.

APPLICATION

To ensure optimal assay performance, AREX recommends conducting reagent titration tailored to each testing system for optimal detection results.

WB	1:200 - 1:1000
Sandwich ELISA	1:250 - 1:500
IHC	1:250 - 1:500

*Results are sample-specific. Please refer to your local assay conditions and test parameters for reference.

PRODUCT OVERVIEW

Species Reactivity	Human, Mouse
Clonality	Monoclonal
Isotype	Mouse / IgG2a
Immunogen	Recombinant human Tau (phospho)
Cross Reactivity	Not tested
Recombinant	Not recombinant
Purification	Protein A purification
Form	Liquid
Conjugation	Unconjugated

*AREX continuously optimizes our products. Webpage content may not reflect the latest updates. For inquiries, please contact info@arexbio.com or your local distributor.

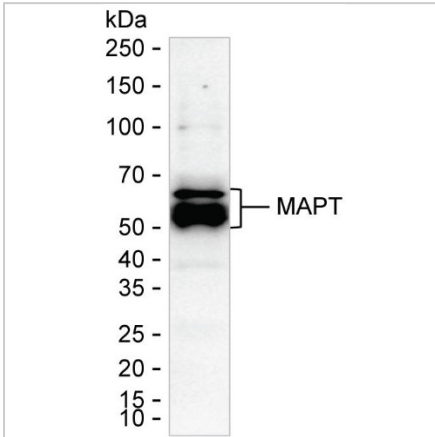
*Clone Number, Reactivity, Source/Host and Clonality can be found in the product name and Key Features section above.

DATASHEET

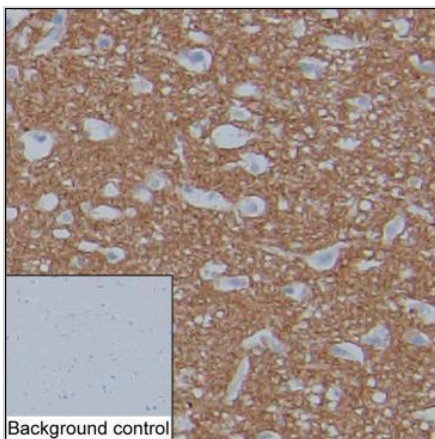
Tau (S422) Mouse Monoclonal Antibody(ARA958)

CAT. NO. ARA6807

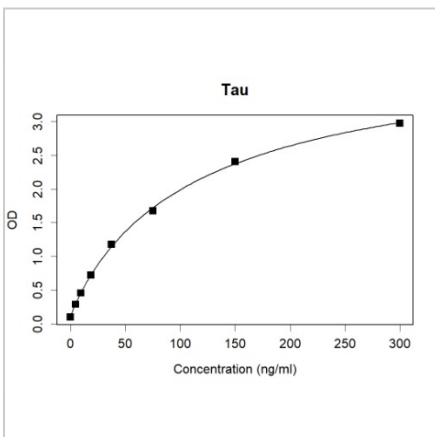
DATA



Western blotting analysis of Tau (S422)



Immunohistochemical staining of brain tissue sections using Tau (S422) Mouse Monoclonal Antibody (ARA958).



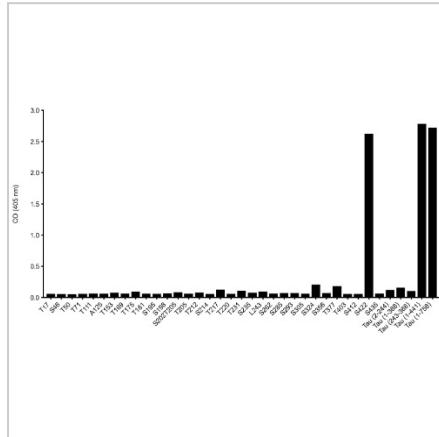
Sandwich ELISA analysis of Tau (S422)

DATASHEET

Tau (S422) Mouse Monoclonal Antibody(ARA958)

CAT. NO. ARA6807

DATA (CONTINUED)



Epitope analysis of Tau (S422) by ELISA.

STORAGE

Shipped at 4°C. Store at -20°C for one year. Avoid repeated freeze/thaw cycles.

NOTE

For Research Use Only. Not for diagnostic, therapeutics, prophylactic or in vivo use.