

DATASHEET

Human pTau217 Antibody Pair(ARA957/ARA958)

CAT. NO. ARA6808

KEY FEATURES

Target	pTau217	Source / Host	Mouse
Reactivity	Human	Clonality	Monoclonal
Applications	Sandwich ELISA	Storage	-20°C

BACKGROUND

Plasma p - tau217 is a biomarker associated with Alzheimer's disease (AD) pathology. Research has shown that plasma p - tau217 is a sensitive marker of the clinical manifestation and progression of AD, including amyloid accumulation, tau burden, brain atrophy, and physical degradation. It has been found to be a potential non - invasive biomarker of AD, with high diagnostic accuracy in differentiating AD from other neurodegenerative diseases. Plasma p - tau217 has also been associated with longitudinal increases in Aβ PET uptake and cognitive decline in Aβ - positive clinically unimpaired individuals. Additionally, higher baseline p - tau217 levels have been linked to greater future tau PET pathology burden and worse future memory performance. These findings suggest that plasma p - tau217 could serve as a minimally invasive diagnostic and prognostic biomarker for AD, with potential utility in clinical practice and trials.

APPLICATION

*Results are sample-specific. Please refer to your local assay conditions and test parameters for reference.

PRODUCT OVERVIEW

Antibody pair specificity	pTau217
Species reactivity	Human
Protein standard	Recombinant Human p-Tau217 Protein
Target antigen	Protein name: Microtubule-associated protein tau Gene name: MAPT UniProt Accession: P10636-8 Organism: Homo sapiens (Human)
Cross reactivity	Not Tested

*AREX continuously optimizes our products. Webpage content may not reflect the latest updates. For inquiries, please contact info@arexbio.com or your local distributor.

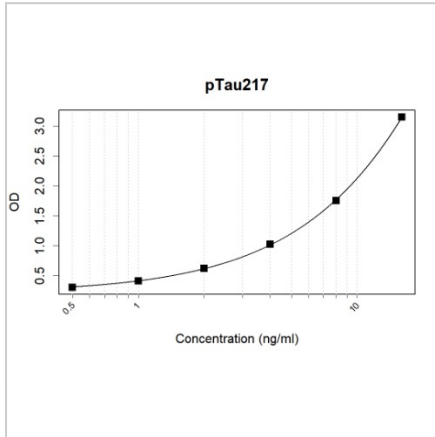
*Clone Number, Reactivity, Source/Host and Clonality can be found in the product name and Key Features section above.

DATASHEET

Human pTau217 Antibody Pair(ARA957/ARA958)

CAT. NO. ARA6808

DATA



Sandwich ELISA

STORAGE

Shipped at 4°C. Store at -20°C for one year. Avoid repeated freeze/thaw cycles.

NOTE

For Research Use Only. Not for diagnostic, therapeutics, prophylactic or in vivo use.

More information: www.arexbio.com