

DATASHEET

C1GALT1 Rabbit Polyclonal Antibody

CAT. NO. ARA6809

KEY FEATURES

Target	C1GALT1	Source / Host	Rabbit
Reactivity	Human, Mouse,Rat	Clonality	Polyclonal
Applications	WB	Storage	-20°C

BACKGROUND

Glycosyltransferase that generates the core 1 O-glycan Gal-beta1-3GalNAc-alpha1-Ser/Thr (T antigen), which is a precursor for many extended O-glycans in glycoproteins. Plays a central role in many processes, such as angiogenesis, thrombopoiesis and kidney homeostasis development.

APPLICATION

To ensure optimal assay performance, AREX recommends conducting reagent titration tailored to each testing system for optimal detection results.

WB	1:500 - 1:1000
----	----------------

*Results are sample-specific. Please refer to your local assay conditions and test parameters for reference.

PRODUCT OVERVIEW

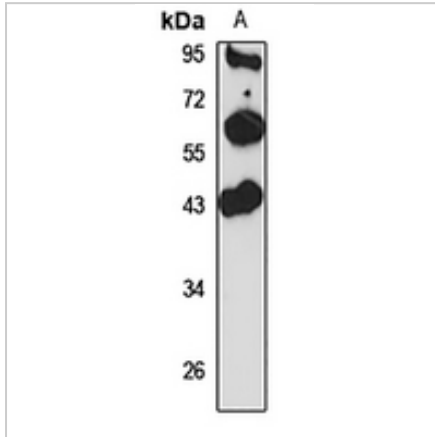
Immunogen	Recombinant fusion protein of human C1GALT1. The exact sequence is proprietary
Purification	The antibody was purified by immunogen affinity chromatography
Form/Buffer	Liquid in 0.42% Potassium phosphate, 0.87% Sodium chloride, pH 7.3, 30% glycerol, and 0.01% sodium azide
Synonyms	C1GALT1
Alternative Names	Glycoprotein-N-acetylgalactosamine 3-beta-galactosyltransferase 1; B3Gal-T8; Core 1 O-glycan T-synthase; Core 1 UDP-galactose:N-acetylgalactosamine-alpha-R beta 1-3-galactosyltransferase 1; Beta-1-3-galactosyltransferase; Core 1 beta1 3-galactosyltransferase C1; C1GalT1; Core 1 beta3-Gal-T1
Gene ID (Human)	56913
Gene ID (Mouse)	94192
Protein ID (Human)	Q9NS00
Protein ID (Mouse)	Q9JJ06

*AREX continuously optimizes our products. Webpage content may not reflect the latest updates. For inquiries, please contact info@arexbio.com or your local distributor.

*Clone Number, Reactivity, Source/Host and Clonality can be found in the product name and Key Features section above.

DATASHEET**C1GALT1 Rabbit Polyclonal Antibody**

CAT. NO. ARA6809

DATA

Western blot analysis of C1GALT1 expression in mouse kidney (A) whole cell lysates.
(Predicted band size: 35; 42 kD; Observed band size: 42 kD)

STORAGE

Shipped at 4°C. Store at -20°C for one year. Avoid repeated freeze/thaw cycles.

NOTE

For Research Use Only. Not for diagnostic, therapeutics, prophylactic or in vivo use.

More information: www.arexbio.com