

DATASHEET

PRDM1 Rabbit Polyclonal Antibody

CAT. NO. ARA6810

KEY FEATURES

Target	PRDM1	Source / Host	Rabbit
Reactivity	Human, Mouse,Rat	Clonality	Polyclonal
Applications	WB, IHC, FC	Storage	-20°C

BACKGROUND

Transcription factor that mediates a transcriptional program in various innate and adaptive immune tissue-resident lymphocyte T cell types such as tissue-resident memory T (Trm), natural killer (trNK) and natural killer T (NKT) cells and negatively regulates gene expression of proteins that promote the egress of tissue-resident T-cell populations from non-lymphoid organs. Plays a role in the development, retention and long-term establishment of adaptive and innate tissue-resident lymphocyte T cell types in non-lymphoid organs, such as the skin and gut, but also in other nonbarrier tissues like liver and kidney, and therefore may provide immediate immunological protection against reactivating infections or viral reinfection (By similarity). Binds specifically to the PRDI element in the promoter of the beta-interferon gene . Drives the maturation of B-lymphocytes into Ig secreting cells . Associates with the transcriptional repressor ZNF683 to chromatin at gene promoter regions (By similarity).

APPLICATION

To ensure optimal assay performance, AREX recommends conducting reagent titration tailored to each testing system for optimal detection results.

WB	1:500 - 1:1000
FC	1:50 - 1:100
IHC	1:100 - 1:500

*Results are sample-specific. Please refer to your local assay conditions and test parameters for reference.

PRODUCT OVERVIEW

Product Name	PRDM1 Rabbit Polyclonal Antibody
Antibody Type	Rabbit Polyclonal Antibody
Immunogen	Synthetic peptide within Human aa 770-825 / 825
Species Reactivity	Human, Mouse, Rat
Validated Applications	IHC-P, FC, WB
Molecular Weight	Predicted band size: 92 kDa
Positive Control	Rat cervix tissue, human skin tissue, human esophagus tissue, mouse esophagus tissue, PANC-1, mouse kidney tissue lysate, rat kidney tissue lysate
Conjugation	unconjugated
Form	Liquid
Form/Buffer	1*TBS (pH7.4), 0.2% BSA, 50% Glycerol. Preservative: 0.05% Sodium Azide
Isotype	IgG
Purification	Immunogen affinity purified

*AREX continuously optimizes our products. Webpage content may not reflect the latest updates. For inquiries, please contact info@arexbio.com or your local distributor.

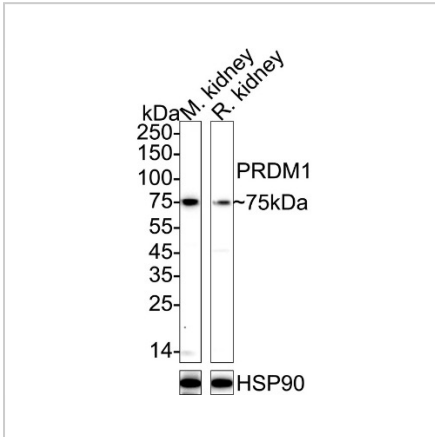
*Clone Number, Reactivity, Source/Host and Clonality can be found in the product name and Key Features section above.

DATASHEET

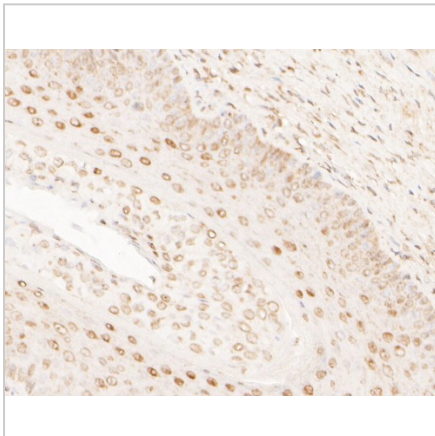
PRDM1 Rabbit Polyclonal Antibody

CAT. NO. ARA6810

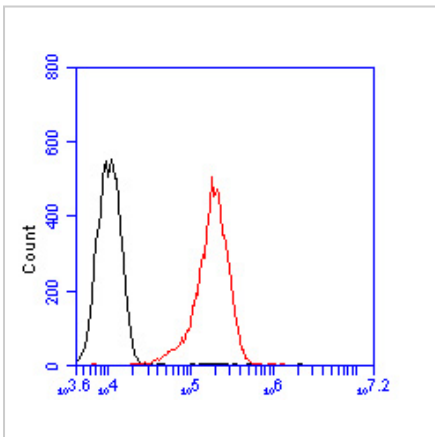
DATA



Western blot analysis of PRDM1 on different lysates with PRDM1 antibody



Immunohistochemical analysis of paraffin-embedded rat cervix tissue using anti-PRDM1 antibody.



Flow cytometric analysis of PRDM1 was done on PANC-1 cells.

STORAGE

Shipped at 4°C. Store at -20°C for one year. Avoid repeated freeze/thaw cycles.

NOTE

For Research Use Only. Not for diagnostic, therapeutics, prophylactic or in vivo use.

More information: www.arexbio.com