

DATASHEET

Exosome Antibody Panel

CAT. NO. ARA6815

KEY FEATURES

Target	CD9,CD63,TAPA1/CD81,TSG101	Source / Host	Rabbit
Reactivity	Human	Clonality	Monoclonal
Applications	WB	Storage	-20°C

BACKGROUND

Exosome Antibody Panel provides an economical means of analyzing proteins that can be present on exosomes. The panel includes antibodies to perform western blot experiment with each primary antibody.

APPLICATION

To ensure optimal assay performance, AREX recommends conducting reagent titration tailored to each testing system for optimal detection results.

Antibody	Recommended Dilution Ratio(WB)
CD9	1:2,000-1:5,000
CD63	1:500-1:1,000
TAPA1/CD81	1:1,000-1:2,000
TSG101	1:2,000-1:5,000

*Results are sample-specific. Please refer to your local assay conditions and test parameters for reference.

PRODUCT OVERVIEW

*AREX continuously optimizes our products. Webpage content may not reflect the latest updates. For inquiries, please contact info@arexbio.com or your local distributor.

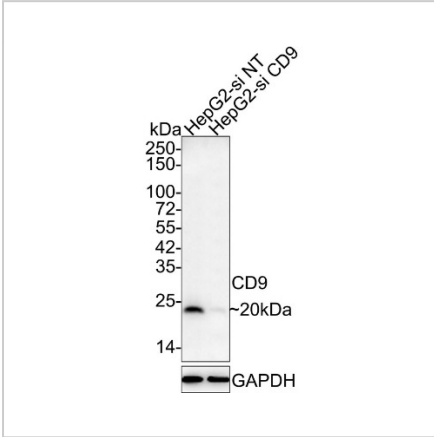
*Clone Number, Reactivity, Source/Host and Clonality can be found in the product name and Key Features section above.

DATASHEET

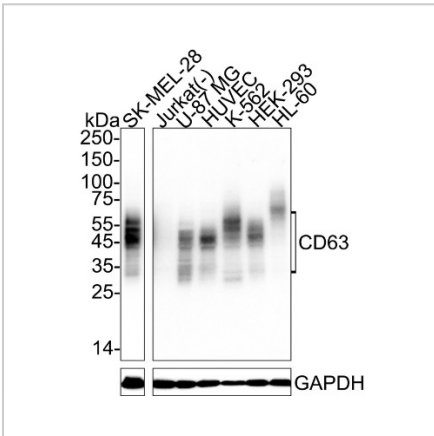
Exosome Antibody Panel

CAT. NO. ARA6815

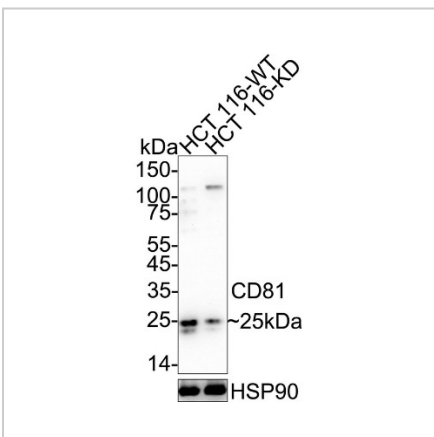
DATA



Western blot analysis of CD9 on different lysates with CD9 antibody.



Western blot analysis of CD63 on different lysates with CD63 antibody.



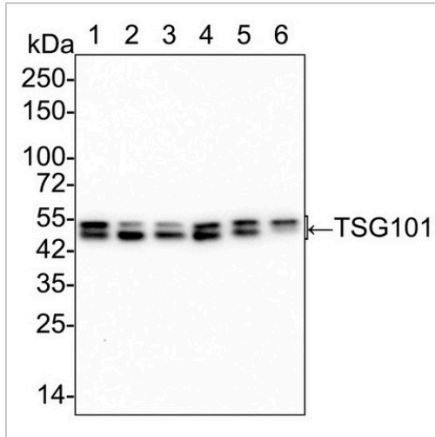
Western blot analysis of TAPA1/CD81 on different lysates with TAPA1/CD81 antibody.

DATASHEET

Exosome Antibody Panel

CAT. NO. ARA6815

DATA (CONTINUED)



Western blot analysis of TSG101 on different lysates with TSG101 antibody.

STORAGE

Shipped at 4°C. Store at -20°C for one year. Avoid repeated freeze/thaw cycles.

NOTE

For Research Use Only. Not for diagnostic, therapeutics, prophylactic or in vivo use.