

DATASHEET

pTau217 Mouse Monoclonal Antibody(ARA974)

CAT. NO. ARA6840

KEY FEATURES

Target	pTau231	Source / Host	Mouse
Reactivity	Human	Clonality	Monoclonal
Applications	ELISA	Storage	-20°C

BACKGROUND

Plasma p-tau217 is a biomarker associated with Alzheimer's disease (AD) pathology. Research has shown that plasma p-tau217 is a sensitive marker of the clinical manifestation and progression of AD, including amyloid accumulation, tau burden, brain atrophy, and physical degradation. It has been found to be a potential non-invasive biomarker of AD, with high diagnostic accuracy in differentiating AD from other neurodegenerative diseases. Plasma p-tau217 has also been associated with longitudinal increases in Aβ PET uptake and cognitive decline in Aβ-positive clinically unimpaired individuals. Additionally, higher baseline p-tau217 levels have been linked to greater future tau PET pathology burden and worse future memory performance. These findings suggest that plasma p-tau217 could serve as a minimally invasive diagnostic and prognostic biomarker for AD, with potential utility in clinical practice and trials.

APPLICATION

To ensure optimal assay performance, AREX recommends conducting reagent titration tailored to each testing system for optimal detection results.

ELISA	1:1,500- 1:2,000
-------	------------------

*Results are sample-specific. Please refer to your local assay conditions and test parameters for reference.

PRODUCT OVERVIEW

Antibody specificity	pTau217
Isotype	IgG1
Immunogen	Synthetic peptide within aa200-250 of Tau. The exact peptide sequence is proprietary information.
Cross reactivity	Not tested
Recombinant	Not recombinant
Purification	Protein A purification
Form/Buffer	PBS, carrier-free, with optional 0.09% sodium azide
Conjugation	Unconjugated

*AREX continuously optimizes our products. Webpage content may not reflect the latest updates. For inquiries, please contact info@arexbio.com or your local distributor.

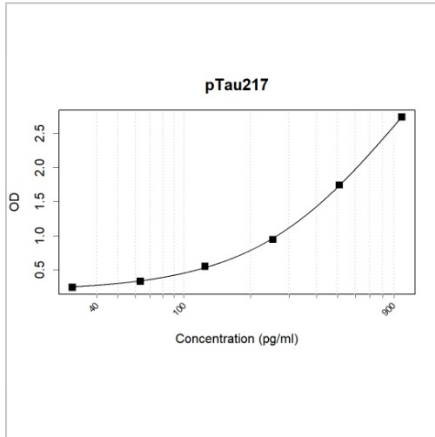
*Clone Number, Reactivity, Source/Host and Clonality can be found in the product name and Key Features section above.

DATASHEET

pTau217 Mouse Monoclonal Antibody(ARA974)

CAT. NO. ARA6840

DATA



Sandwich ELISA analysis of pTau217 by ARA6840 & ARA6843. Microtiter plates were coated with KAA338_16C8 as the capture antibody. Recombinant pTau217 protein (AXP6612) was applied as the antigen. Peroxidase conjugated pTau217 Antibody (ARA6843) served as the detection antibody. Result: ARA6840 and ARA6843 can be used as a matched antibody pair to detect and quantify the concentration of pTau217.

STORAGE

Shipped at 4°C. Store at -20°C for one year. Avoid repeated freeze/thaw cycles.

NOTE

For Research Use Only. Not for diagnostic, therapeutics, prophylactic or in vivo use.

More information: www.arexbio.com