

DATASHEET

pTau181 Mouse Monoclonal Antibody(ARA978)

CAT. NO. ARA6844

KEY FEATURES

Target	pTau181	Source / Host	Mouse
Reactivity	Human	Clonality	Monoclonal
Applications	Sandwich ELISA	Storage	-20°C

BACKGROUND

The protein expressed by the MAPT gene promotes microtubule assembly and stability and might be involved in establishing and maintaining neuronal polarity. Its C-terminus binds axonal microtubules, and the N-terminus binds neural plasma membrane components, suggesting that tau functions as a linker protein between the two. Axonal polarity is predetermined by MAPT localization within the neuronal cell's domain defined by the centrosome. The short isoforms allow cytoskeleton plasticity, whereas the longer isoforms may preferentially play a role in its stabilization. This supplementary information is collated from multiple sources and compiled automatically.

APPLICATION

To ensure optimal assay performance, AREX recommends conducting reagent titration tailored to each testing system for optimal detection results.

ELISA	1:250 - 1:500
-------	---------------

*Results are sample-specific. Please refer to your local assay conditions and test parameters for reference.

PRODUCT OVERVIEW

Antibody Specificity	Recognizing pTau protein with an epitope containing phosphorylated T181. The antibody was raised against phosphorylated T181 peptide. Cross-reactivity of the antibody to pT175 peptide is possibly due
Isotype	IgG1
Immunogen	Human MAPT peptide
Cross Reactivity	Not tested
Recombinant	Not recombinant
Purification	Protein A purification
Form/Buffer	PBS, carrier-free, with optional 0.09% sodium azide
Conjugation	Unconjugated

*AREX continuously optimizes our products. Webpage content may not reflect the latest updates. For inquiries, please contact info@arexbio.com or your local distributor.

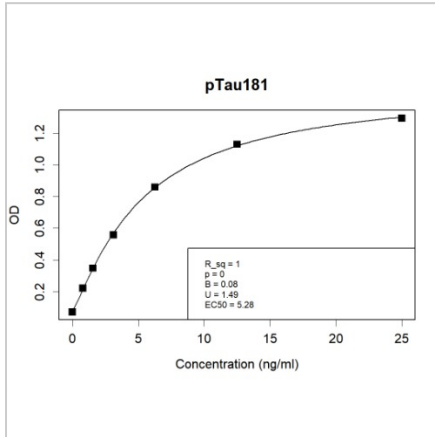
*Clone Number, Reactivity, Source/Host and Clonality can be found in the product name and Key Features section above.

DATASHEET

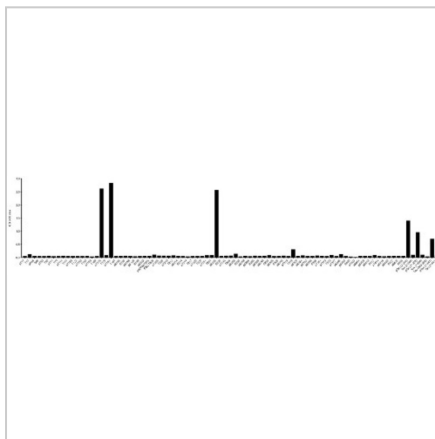
pTau181 Mouse Monoclonal Antibody(ARA978)

CAT. NO. ARA6844

DATA



Sandwich ELISA analysis of pTau181 by ARA6844 & ARA6837. Microtiter plates were coated with ARA6844 as the capture antibody. Recombinant pTau181 protein (Cat. AXP6613) was applied as the antigen. Peroxidase conjugated pTau181 Antibody (ARA6837) served as the detection antibody. Result: ARA6844 and ARA6837 can be used as a matched antibody pair to detect and quantify the concentration of pTau181.



Epitope analysis of pTau181 by ARA6844 by ELISA. Synthetic peptides with or without phosphorylation at indicated positions were coated onto microtiter wells. Recombinant Tau proteins with or without defined phosphorylations or point mutations were also coated. The antibody ARA6844 was applied as the primary antibody. Peroxidase-conjugated goat anti-mouse IgG was used as the secondary antibody. Signals were detected using a colorimetric assay. Result: ARA6844 recognizes pTau protein with epitopes containing any of phosphorylated T175, T181 and S235.

STORAGE

Shipped at 4°C. Store at -20°C for one year. Avoid repeated freeze/thaw cycles.

NOTE

For Research Use Only. Not for diagnostic, therapeutics, prophylactic or in vivo use.

More information: www.arexbio.com