

DATASHEET

pTau217 Mouse Monoclonal Antibody(ARA980)

CAT. NO. ARA6846

KEY FEATURES

Target	pTau217	Source / Host	Mouse
Reactivity	Human	Clonality	Monoclonal
Applications	ELISA	Storage	-20°C

BACKGROUND

Promotes microtubule assembly and stability, and might be involved in the establishment and maintenance of neuronal polarity. The C-terminus binds axonal microtubules while the N-terminus binds neural plasma membrane components, suggesting that tau functions as a linker protein between both. Axonal polarity is predetermined by TAU/MAPT localization (in the neuronal cell) in the domain of the cell body defined by the centrosome. The short isoforms allow plasticity of the cytoskeleton whereas the longer isoforms may preferentially play a role in its stabilization.

APPLICATION

To ensure optimal assay performance, AREX recommends conducting reagent titration tailored to each testing system for optimal detection results.

Sandwich ELISA	1:250 - 1:500
----------------	---------------

*Results are sample-specific. Please refer to your local assay conditions and test parameters for reference.

PRODUCT OVERVIEW

Antibody Specificity	Recognizing pTau with the epitope containing phosphorylated T217
Isotype	IgG1
Immunogen	Synthetic peptide within aa200-250 of Tau. The exact peptide sequence is proprietary information
Cross Reactivity	Not tested
Recombinant	Not recombinant
Purification	Protein A purification
Form/Buffer	PBS, carrier-free, with optional 0.09% sodium azide
Conjugation	Unconjugated

*AREX continuously optimizes our products. Webpage content may not reflect the latest updates. For inquiries, please contact info@arexbio.com or your local distributor.

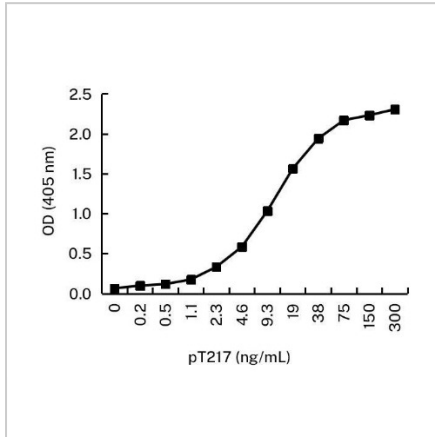
*Clone Number, Reactivity, Source/Host and Clonality can be found in the product name and Key Features section above.

DATASHEET

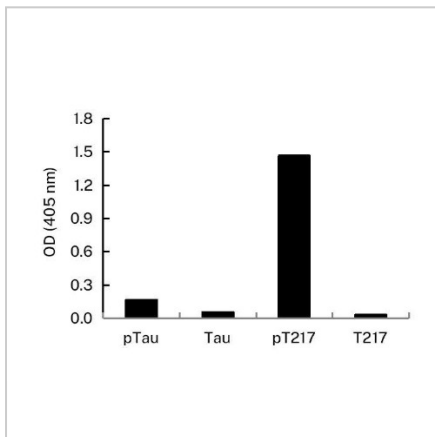
pTau217 Mouse Monoclonal Antibody(ARA980)

CAT. NO. ARA6846

DATA



Sandwich ELISA analysis of pTau217 by ARA6846 & ARA6837. Microtiter wells were coated with ARA6846 as the capture antibody. Human Tau (phospho T217) was used as the antigen. Peroxidase conjugated mouse anti-human Tau monoclonal antibody (ARA6837) was used as the detection antibody. Result: ARA6846 and ARA6837 can be used as a matched antibody pair to detect and quantify the concentration of pTau217.



Cross reactivity of ARA6846 to other peptides and recombinant proteins by ELISA. Microtiter wells were coated with various peptides and recombinant proteins. ARA6846 was used as the primary antibody and peroxidase conjugated goat anti-mouse IgG was used as the secondary antibody. Result: ARA6846 recognized pTau protein with the epitope containing phosphorylated T217.

STORAGE

Shipped at 4°C. Store at -20°C for one year. Avoid repeated freeze/thaw cycles.

NOTE

For Research Use Only. Not for diagnostic, therapeutics, prophylactic or in vivo use.

More information: www.arexbio.com