

DATASHEET

Human pTau205 Antibody Pair(ARA982/ARA971)

CAT. NO. ARA6858

KEY FEATURES

Target	pTau205	Source / Host	Mouse
Reactivity	Human	Clonality	Monoclonal
Applications	Sandwich ELISA	Storage	-20°C

BACKGROUND

Phosphorylated tau at position 205 (p-tau205) has emerged as a significant biomarker for tau pathology in Alzheimer's disease (AD).Recent studies indicate that p-tau205 levels increase progressively across the AD continuum, correlating strongly with neurofibrillary tangles rather than amyloid plaques, which are typically associated with earlier stages of the disease.This biomarker demonstrates robust associations with tau-PET imaging, particularly in advanced Braak stages of tau pathology, suggesting its potential utility in staging and monitoring disease progression.CSF p-tau205 is also linked to cognitive decline, highlighting its relevance in clinical settings for diagnosing and tracking AD.Its high specificity for tau pathology positions it as a promising alternative to traditional imaging methods in both research and clinical trials aimed at developing AD therapies.

APPLICATION

The pTau205 Matched Antibody Pair is expertly designed for immunoassay technologies and high-throughput ELISA platforms that require specifically labeled antibody pairs. These pairs can be customized with a variety of labels such as fluorophores, biotin, and beads. Compatible technologies include MSD, Luminex, Quanterix Simoa, Alpha Technology etc.

*Results are sample-specific. Please refer to your local assay conditions and test parameters for reference.

PRODUCT OVERVIEW

Antibody Pair Specificity	pTau205
Species Reactivity	Human
Protein Standard	Recombinant Human p-Tau205 Protein
Target Antigen	Protein name: Microtubule-associated protein tau; Gene name: MAPT; Organism: Homo sapiens (Human)
Cross Reactivity	Not Tested

*AREX continuously optimizes our products. Webpage content may not reflect the latest updates. For inquiries, please contact info@arexbio.com or your local distributor.

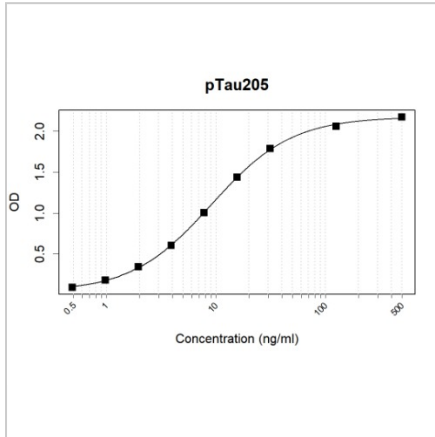
*Clone Number, Reactivity, Source/Host and Clonality can be found in the product name and Key Features section above.

DATASHEET

Human pTau205 Antibody Pair(ARA982/ARA971)

CAT. NO. ARA6858

DATA



Sandwich ELISAMicrotiter wells were coated with ARA6848 at 5 µg/mL as the capture antibody. Recombinant pTau205 protein (Cat #: AXP6615) was used as the antigen. 1 µg/mL biotin conjugated Tau Antibody (ARA6837) was used as the detection antibody. Result: ARA6848 and ARA6837 can be used as a matched antibody pair to detect and quantify the concentration of Human pTau205 with high specificity.

STORAGE

Shipped at 4°C. Store at -20°C for one year. Avoid repeated freeze/thaw cycles.

NOTE

For Research Use Only. Not for diagnostic, therapeutics, prophylactic or in vivo use.

More information: www.arexbio.com