

DATASHEET

2SC Rabbit Polyclonal Antibody

CAT. NO. ARA6865

KEY FEATURES

Target	2SC	Source / Host	Rabbit
Reactivity	Human	Clonality	Polyclonal
Applications	IHC	Storage	-20°C

BACKGROUND

Succination is a stable post-translational modification of cysteine residues, which modifies protein function or turnover in response to a changing intracellular redox environment. Succination occurs when the Krebs cycle intermediate, fumarate, reacts with cysteine yielding S-(2-succino)cysteine (2SC). A wide range of proteins are subject to succination, including enzymes, adipokines, cytoskeletal proteins and ER chaperones and succination has been shown to have roles in regulatory biology. An increase in succination of adipocyte proteins is seen in diabetes mellitus and results from nutrient excess derived mitochondrial stress. 2SC therefore serves as a biomarker of mitochondrial stress or dysfunction in chronic diseases, such as obesity, diabetes, and cancer.

APPLICATION

To ensure optimal assay performance, AREX recommends conducting reagent titration tailored to each testing system for optimal detection results.

IHC	1:50 - 1:200
-----	--------------

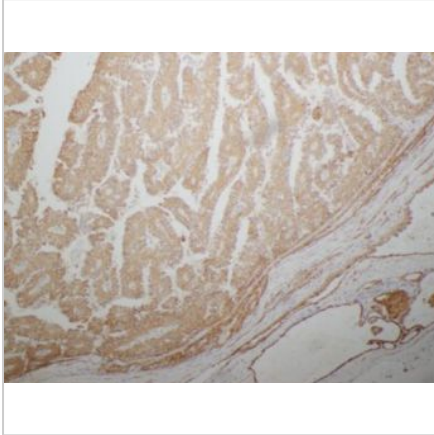
*Results are sample-specific. Please refer to your local assay conditions and test parameters for reference.

PRODUCT OVERVIEW

Immunogen	KLH conjugated S-(2-succinyl)-cysteine
Isotype	IgG
Form/Buffer	Liquid in PBS containing 0.01% Sodium Azide and 1% Trehalose
Cross Reactivity	Succinated proteins
Storage Conditions	The product should be stored at -20°C. It is recommended to aliquot into working volumes to avoid multiple freeze/thaw cycles.
Preparation Method	Crude antiserum was purified by affinity chromatography using S-(2-succinyl)-cysteine specific antigen

*AREX continuously optimizes our products. Webpage content may not reflect the latest updates. For inquiries, please contact info@arexbio.com or your local distributor.

*Clone Number, Reactivity, Source/Host and Clonality can be found in the product name and Key Features section above.

DATASHEET**2SC Rabbit Polyclonal Antibody****CAT. NO. ARA6865****DATA**

Immunohistochemical staining of hereditary leiomyomatosis and renal cell carcinoma(HLRCC) sections using 2SC Rabbit Polyclonal Antibody.

STORAGE

Shipped at 4°C. Store at -20°C for one year. Avoid repeated freeze/thaw cycles.

NOTE

For Research Use Only. Not for diagnostic, therapeutics, prophylactic or in vivo use.

More information: www.arexbio.com