

DATASHEET

SC Mouse Monoclonal Antibody(ARA987)

CAT. NO. ARA6872

KEY FEATURES

Target	SC	Source / Host	Mouse
Reactivity	Human, Mouse, Rat	Clonality	Monoclonal
Applications	IHC	Storage	-20°C

BACKGROUND

Polymeric IgA and IgM is produced and secreted by B cells in the lamina propria, which is beneath the mucosal lining of polarized epithelial cells. Polymeric immunoglobulin receptors, also designated pIgRs, are expressed on the basolateral surface of glandular epithelium and mediate transcellular transport of secretory immunoglobulin polymers across the epithelium. pIgR associates with secreted dimeric IgA and IgM molecules. During transcellular transport of these Ig polymers, pIgR undergoes proteolytic cleavage to generate a fragment called secretory component (SC), polymeric immunoglobulin receptor or poly-Ig receptor. When immunoglobulin polymers associate with SC, they become resistant to enzymatic degradation during the transcytosis process. SC and the pIgR are crucial for proper mucosal immunity, where they represent a molecular chaperone for polymeric Igs to remain intact and enter into body fluids. The human SC (pIgR) gene maps to chromosome 1q32.1 and encodes a 764 amino acid protein. The receptor contains five units with homology to the variable (V) units of immunoglobulins and a transmembrane region that shares homology to certain immunoglobulin variable regions.

APPLICATION

To ensure optimal assay performance, AREX recommends conducting reagent titration tailored to each testing system for optimal detection results.

IHC	1:50 - 1:500
-----	--------------

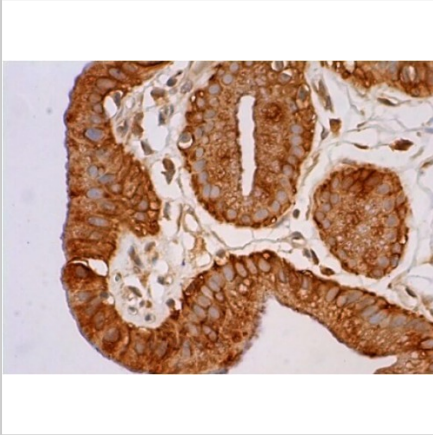
*Results are sample-specific. Please refer to your local assay conditions and test parameters for reference.

PRODUCT OVERVIEW

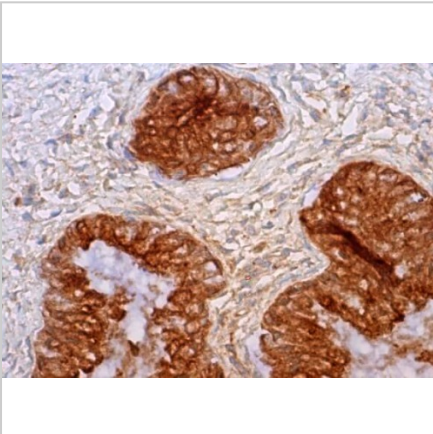
Isotype	IgG ₁ kappa light chain
Amino Acids	465-764
Epitope Target	SC
Epitope Species	human
Product	SC
Reactivity/Assay	
Species	mouse, rat, human
Reactivity/Assay	
Applications	IHC

*AREX continuously optimizes our products. Webpage content may not reflect the latest updates. For inquiries, please contact info@arexbio.com or your local distributor.

*Clone Number, Reactivity, Source/Host and Clonality can be found in the product name and Key Features section above.

DATASHEET**SC Mouse Monoclonal Antibody(ARA987)****CAT. NO. ARA6872****DATA**

Immunohistochemical staining of human gallbladder tissue sections using SC Mouse Monoclonal Antibody (ARA987).



Immunohistochemical staining of human cervical tissue sections using SC Mouse Monoclonal Antibody (ARA987).

STORAGE

Store at 4°C, DO NOT FREEZE. Stable for one year from the date of shipment.

NOTE

For Research Use Only. Not for diagnostic, therapeutics, prophylactic or in vivo use.

More information: www.arexbio.com