

**DATASHEET**

**Human Tau antibody pair (ARA958/ARA971)**

**CAT. NO. ARA6883**

**KEY FEATURES**

Target	Tau	Source / Host	Mouse
Reactivity	Human	Clonality	Monoclonal
Applications	Sandwich ELISA	Storage	-20°C

**BACKGROUND**

Human Tau is a protein that helps stabilize the internal skeleton of nerve cells (neurons) in the brain. This internal skeleton has a tube-like shape through which molecules are transported across the cell. Tau stabilizes the microtubules that make up this skeleton to help them function best. Tau is found mostly in the messenger cells of our brains, called neurons, and is predominantly expressed in the neurons of the cerebral cortex where it has the highest abundance. In Alzheimer's disease, an abnormal form of tau accumulates and begins sticking together in thread-like structures called neurofibrillary tangles. These tangles are not effectively disposed of through the cell's usual ways of removing "trash." The build-up damages the disrupting how neurons function. Tau tangles start in the brainstem, which connects the brain to the spinal cord. Elevated tau levels are observed in the brain decades before the onset of Alzheimer's disease symptoms like memory loss.

**APPLICATION**

The Tau Matched Antibody Pair is expertly designed for immunoassay technologies and high-throughput ELISA platforms that require specifically labeled antibody pairs. These pairs can be customized with a variety of labels such as fluorophores, biotin, and beads. Compatible technologies include MSD, Luminex, Quanterix Simoa, Alpha Technology etc.

\*Results are sample-specific. Please refer to your local assay conditions and test parameters for reference.

**PRODUCT OVERVIEW**

Antibody Pair Specificity	Tau
Species Reactivity	Human
Protein Standard	Recombinant Human Tau Protein
Target Antigen	Protein name: Microtubule-associated protein tau; Gene name: MAPT; Organism: Homo sapiens (Human)
Cross Reactivity	Not Tested

\*AREX continuously optimizes our products. Webpage content may not reflect the latest updates. For inquiries, please contact [info@arexbio.com](mailto:info@arexbio.com) or your local distributor.

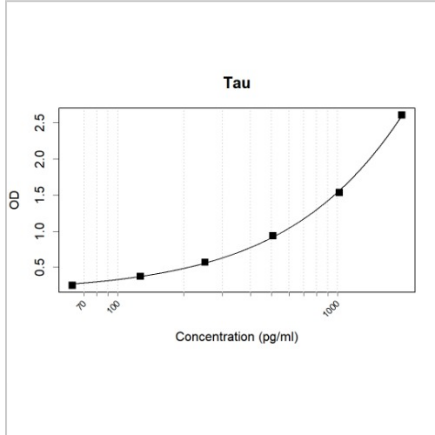
\*Clone Number, Reactivity, Source/Host and Clonality can be found in the product name and Key Features section above.

**DATASHEET**

**Human Tau antibody pair (ARA958/ARA971)**

**CAT. NO. ARA6883**

**DATA**



Sandwich ELISAMicrotiter wells were coated with ARA6807 at 0.5 µg/mL as the capture antibody. Recombinant Tau protein (AXP6617) was used as the antigen. 100 ng/mL biotin conjugated Tau Antibody (ARA6837) was used as the detection antibody. Result: ARA6807 and ARA6837 can be used as a matched antibody pair to detect and quantify the concentration of Human Tau with high specificity.

**STORAGE**

Shipped at 4°C. Store at -20°C for one year. Avoid repeated freeze/thaw cycles.

**NOTE**

For Research Use Only. Not for diagnostic, therapeutics, prophylactic or in vivo use.

More information: [www.arexbio.com](http://www.arexbio.com)