

DATASHEET

PLA2G1B Rabbit Polyclonal Antibody

CAT. NO. ARA6891

KEY FEATURES

Target	PLA2G1B	Source / Host	Rabbit
Reactivity	Human, Mouse	Clonality	Polyclonal
Applications	Sandwich ELISA	Storage	-20°C

BACKGROUND

Phospholipase A2 catalyzes the release of fatty acids from glycerol-3-phosphocholines. The best known varieties are the digestive enzymes secreted as zymogens by the pancreas of mammals. Sequences of pancreatic PLA2 enzymes from a variety of mammals have been reported. One striking feature of these enzymes is their close homology to venom phospholipases of snakes. Other forms of PLA2 have been isolated from brain, liver, lung, spleen, intestine, macrophages, leukocytes, erythrocytes, inflammatory exudates, chondrocytes, and platelets.

APPLICATION

To ensure optimal assay performance, AREX recommends conducting reagent titration tailored to each testing system for optimal detection results.

WB	1:500 - 1:1000
IHC	1:50 - 1:200

*Results are sample-specific. Please refer to your local assay conditions and test parameters for reference.

PRODUCT OVERVIEW

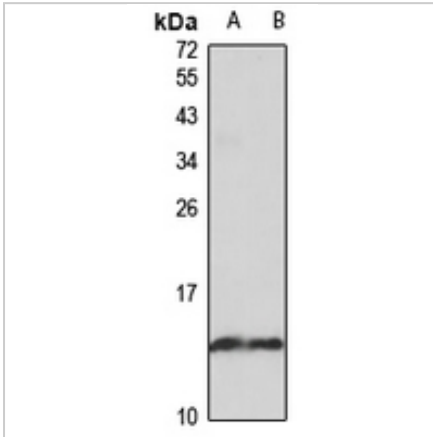
Product Description	Rabbit polyclonal antibody to PLA2G1B
Immunogen	Recombinant fusion protein of human PLA2G1B. The exact sequence is proprietary.
Purification	The antibody was purified by immunogen affinity chromatography.
Clonality	Polyclonal
Form/Buffer	Liquid in 0.42% Potassium phosphate, 0.87% Sodium chloride, pH 7.3, 30% glycerol, and 0.01% sodium azide.
Gene Name	PLA2G1B
Alternative Names	PLA2; PLA2A; PPLA2; Phospholipase A2; Group IB phospholipase A2; Phosphatidylcholine 2-acylhydrolase 1B
Human Gene ID	5319
Mouse Gene ID	18778
Human Protein ID	P04054
Mouse Protein ID	Q3ZOY2

*AREX continuously optimizes our products. Webpage content may not reflect the latest updates. For inquiries, please contact info@arexbio.com or your local distributor.

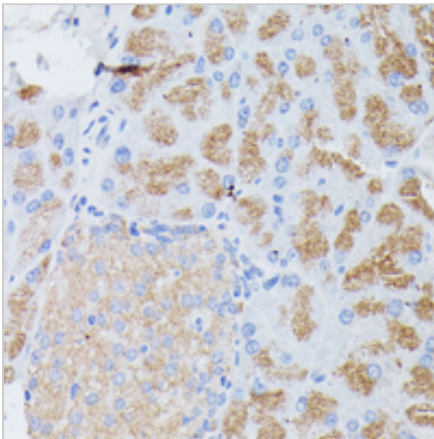
*Clone Number, Reactivity, Source/Host and Clonality can be found in the product name and Key Features section above.

DATASHEET**PLA2G1B Rabbit Polyclonal Antibody**

CAT. NO. ARA6891

DATA

Western blot analysis of PLA2G1B expression in A549 (A), mouse pancreas (B) whole cell lysates. (Predicted band size: 16 kD; Observed band size: 15 kD)



Immunohistochemical analysis of PLA2G1B staining in mouse pancreas formalin fixed paraffin embedded tissue section. The section was pre-treated using heat mediated antigen retrieval with sodium citrate buffer (pH 6.0). The section was then incubated with the antibody at room temperature and detected using an HRP conjugated compact polymer system. DAB was used as the chromogen. The section was then counterstained with haematoxylin and mounted with DPX.

STORAGE

Shipped at 4°C. Store at -20°C for one year. Avoid repeated freeze/thaw cycles.

NOTE

For Research Use Only. Not for diagnostic, therapeutics, prophylactic or in vivo use.

More information: www.arexbio.com