

DATASHEET

CDYL2 Rabbit Polyclonal Antibody

CAT. NO. ARA6892

KEY FEATURES

Target	CDYL2	Source / Host	Rabbit
Reactivity	Human	Clonality	Polyclonal
Applications	IHC	Storage	-20°C

BACKGROUND

CDYL2 (Chromodomain Y Like 2) is a Protein Coding gene. Gene Ontology (GO) annotations related to this gene include methylated histone binding. An important paralog of this gene is CDYL.

APPLICATION

To ensure optimal assay performance, AREX recommends conducting reagent titration tailored to each testing system for optimal detection results.

IHC	1:50-1:100
-----	------------

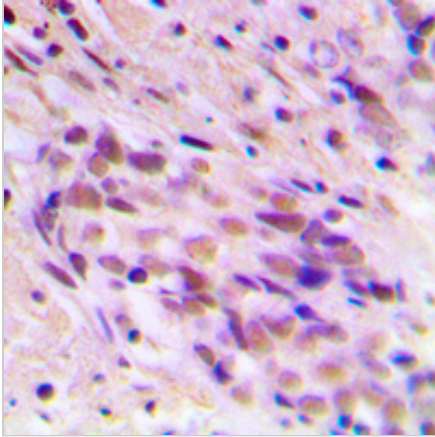
*Results are sample-specific. Please refer to your local assay conditions and test parameters for reference.

PRODUCT OVERVIEW

Immunogen	KLH-conjugated synthetic peptide encompassing a sequence within the N-term region of human CDYL2. The exact sequence is proprietary.
Purification	The antibody was purified by immunogen affinity chromatography.
Form/Buffer	Liquid in 0.42% Potassium phosphate, 0.87% Sodium chloride, pH 7.3, 30% glycerol, and 0.01% sodium azide.
Gene Name	CDYL2
Alternative Names	Chromodomain Y-like protein 2; CDY-like 2
Human Gene ID	124359
Human Protein ID	Q8N8U2

*AREX continuously optimizes our products. Webpage content may not reflect the latest updates. For inquiries, please contact info@arexbio.com or your local distributor.

*Clone Number, Reactivity, Source/Host and Clonality can be found in the product name and Key Features section above.

DATASHEET**CDYL2 Rabbit Polyclonal Antibody****CAT. NO. ARA6892****DATA**

Immunohistochemical analysis of CDYL2 staining in human breast cancer formalin fixed paraffin embedded tissue section. The section was pre-treated using heat mediated antigen retrieval with sodium citrate buffer (pH 6.0). The section was then incubated with the antibody at room temperature and detected using an HRP conjugated compact polymer system. DAB was used as the chromogen. The section was then counterstained with haematoxylin and mounted with DPX.

STORAGE

Shipped at 4°C. Store at -20°C for one year. Avoid repeated freeze/thaw cycles.

NOTE

For Research Use Only. Not for diagnostic, therapeutics, prophylactic or in vivo use.

More information: www.arexbio.com