

**DATASHEET**

**ISCU Rabbit Polyclonal Antibody**

**CAT. NO. ARA6895**

**KEY FEATURES**

Target	ISCU	Source / Host	Rabbit
Reactivity	Human, Mouse, Rat	Clonality	Polyclonal
Applications	WB	Storage	-20°C

**BACKGROUND**

Iron-sulfur (Fe-S) clusters are necessary for several mitochondrial enzymes and other subcellular compartment proteins. They contain sulfur and iron, and are created via several steps that include cysteine desulfurases, iron donors, chaperones, and scaffold proteins. This gene encodes the two isomeric forms, ISCU1 and ISCU2, of the Fe-S cluster scaffold protein. Mutations in this gene have been found in patients with myopathy with severe exercise intolerance and myoglobinuria.

**APPLICATION**

To ensure optimal assay performance, AREX recommends conducting reagent titration tailored to each testing system for optimal detection results.

WB	1:500 - 1:2000
----	----------------

\*Results are sample-specific. Please refer to your local assay conditions and test parameters for reference.

**PRODUCT OVERVIEW**

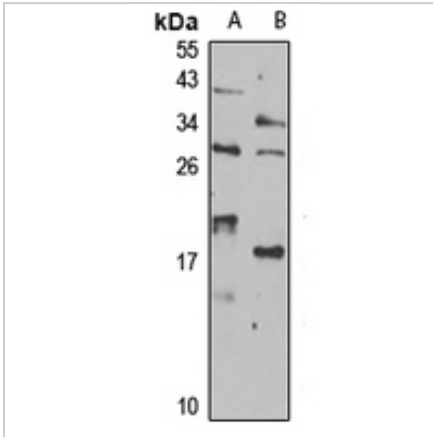
Product Description	Rabbit polyclonal antibody to ISCU
Immunogen	Recombinant fusion protein of human ISCU. The exact sequence is proprietary.
Purification	The antibody was purified by immunogen affinity chromatography.
Clone Type	Polyclonal
Form/Buffer	Liquid in 0.42% Potassium phosphate, 0.87% Sodium chloride, pH 7.3, 30% glycerol, and 0.01% sodium azide.
Gene Name	ISCU
Alternative Names	NIFUN; Iron-sulfur cluster assembly enzyme ISCU mitochondrial; NIFU-like N-terminal domain-containing protein; NIFU-like protein
Gene ID (Human)	23479;
Gene ID (Mouse)	66333;
Protein ID (Human)	Q9H1K1;
Protein ID (Mouse)	Q9D7P6;

\*AREX continuously optimizes our products. Webpage content may not reflect the latest updates. For inquiries, please contact [info@arexbio.com](mailto:info@arexbio.com) or your local distributor.

\*Clone Number, Reactivity, Source/Host and Clonality can be found in the product name and Key Features section above.

**DATASHEET****ISCU Rabbit Polyclonal Antibody**

CAT. NO. ARA6895

**DATA**

Western blot analysis of ISCU expression in HEK293T (A), A549 (B) whole cell lysates.  
(Predicted band size: 17 kD; Observed band size: 25 kD)

**STORAGE**

Shipped at 4°C. Store at -20°C for one year. Avoid repeated freeze/thaw cycles.

**NOTE**

For Research Use Only. Not for diagnostic, therapeutics, prophylactic or in vivo use.

More information: [www.arexbio.com](http://www.arexbio.com)