

DATASHEET

FLI1 Rabbit Monoclonal Antibody(ARA995)

CAT. NO. ARA6900

KEY FEATURES

Target	FLI1	Source / Host	Rabbit
Reactivity	Human	Clonality	Monoclonal
Applications	IHC	Storage	-20°C

BACKGROUND

ETS-1 is the prototype member of a family of genes identified on the basis of homology to the v-Ets oncogene isolated from the E26 erythroblastosis virus. This family of genes currently includes ETS-1, ETS-2, ERG-1, ERG-2, ELK, E74, FLI-1, PU. 1 and PEA3. Members of the ETS gene family exhibit varied pattern of tissue expression, and share a highly conserved carboxy terminal domain containing a sequence related to the SV40 large T antigen nuclear localization signal sequence.

APPLICATION

To ensure optimal assay performance, AREX recommends conducting reagent titration tailored to each testing system for optimal detection results.

IHC	1:200-1:1000
-----	--------------

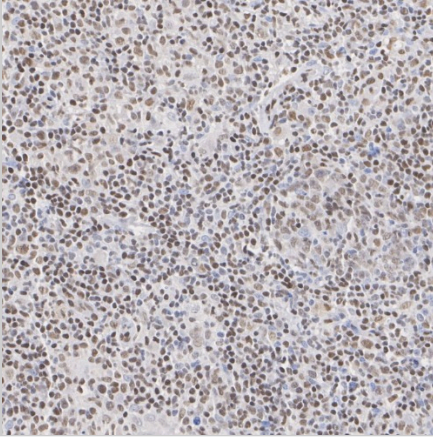
*Results are sample-specific. Please refer to your local assay conditions and test parameters for reference.

PRODUCT OVERVIEW

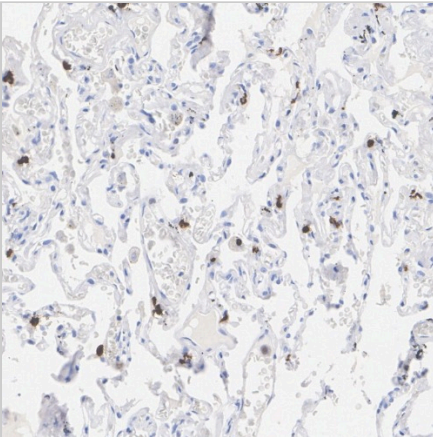
Antibody Type	Recombinant Rabbit monoclonal Antibody
Immunogen	Synthetic peptide within human FLU1 aa 351-400 / 452.
Molecular Weight	Predicted band size: 51 kDa
Positive Control	U-937 cell lysate, Jurkat cell lysate, human B cell lymphoma tissue, human lung tissue.
Conjugation	unconjugated
Form/Buffer	PBS (pH7.4), 0.1% BSA, 40% Glycerol. Preservative: 0.05% Sodium Azide.
Isotype	IgG
Purification	Protein A affinity purified.

*AREX continuously optimizes our products. Webpage content may not reflect the latest updates. For inquiries, please contact info@arexbio.com or your local distributor.

*Clone Number, Reactivity, Source/Host and Clonality can be found in the product name and Key Features section above.

DATASHEET**FLI1 Rabbit Monoclonal Antibody(ARA995)****CAT. NO. ARA6900****DATA**

Immunohistochemical analysis of paraffin-embedded human B cell lymphoma tissue with FLI1 Rabbit Monoclonal Antibody(ARA995).



Immunohistochemical analysis of paraffin-embedded human lung tissue with FLI1 Rabbit Monoclonal Antibody(ARA995).

STORAGE

Shipped at 4°C. Store at -20°C for one year. Avoid repeated freeze/thaw cycles.

NOTE

For Research Use Only. Not for diagnostic, therapeutics, prophylactic or in vivo use.

More information: www.arexbio.com